

R454b Refrigerant

SUBMITTAL DATA SHEET



Series Name: Regular Heat AHU Series
Model Number: MAUHE-H18B-2A/MO18E-H18B-2A

Air Handler Heat Pump System

Location:	Approval:
Engineer:	Date:
Submitted to:	Construction:
Submitted by:	Unit #:
Reference:	Drawing #:



INDOOR SPECIFICATION

Indoor Air Flow (Turbo/H/M/L/Si) (CFM)		618 / 577 / 530 / 488 / 488
Indoor Noise Level (Turbo/H/M/L/Si) (dBA)		44 / 43/ 41 / 33/ 33
Dimension (WxDxH)	inch	21 x 17-1/2 x 45
	mm	534 x 445 x 1143
Package (WxDxH)	inch	26-1/2 x 20-7/8 x 48-5/8
	mm	675 x 530 x 1235
Net/Gross Weight	lbs	106 /127
	kg	48 / 57.5

OUTDOOR SPECIFICATION

Compressor Type		ROTARY
Compressor Model		KSN140D58UFZ
Refrigerant		R454B
Refrigerant Oil Charge(mL)		440
Refrigerant Oil		VG74
Outdoor Air Flow (Max) (CFM)		1,451
Outdoor Noise Level (dBA)		55
Dimension (WxDxH)	inch	31-3/4 x 13 x 21-3/4
	mm	805 x330 x554
Package (WxDxH)	inch	36 x 14-9/16 x 24-3/16
	mm	915x370x615
Net/Gross Weight	lbs	77 /84
	kg	35 / 38

EFFICIENCY

Cooling		Heating	
SEER2	18.8	HSPF2-4	9.1
EER2	11.0	COP	3.15

PERFORMANCE of Cooling

Cooling (Btu/hr)	
Rated Capacity	18,000
Min/Max Capacity	5,350 ~ 2,0000
Moisture Removal(L/h)	1.71
Standard Operating Range(°F/°C)	-13~122(-25~50)
Rated Cooling Conditions:	Indoor: 80°F DB/67°F WB Outdoor: 95°F DB/75°F WB

PERFORMANCE of Heating

Heating (Btu/hr)	
1. @ 47°F Rated	18,000
2. @ 47°F Min/Max Capacity	5,600 ~ 19,000

ELECTRICAL

Indoor Power Supply	115/208/230V,60Hz,1Ph
Indoor MCA 115V/(208/230V)	5.5/4.0
Indoor MOP	15.0
Outdoor Power Supply	208/230V,60Hz,1Ph
Outdoor MCA	16.0
Outdoor MOP	20.0
Communication Wiring	AWG 20/2
Compressor RLA	10.0
Outdoor Fan Motor RLA	0.8
Outdoor Fan Motor W	34
Indoor Fan Motor RLA	2.0
Indoor Fan Motor W	250
System Power Input @ Cooling (W)	1,635 (400 ~ 1,900)
System Power Input @ Heating (W)	1,675 (340 ~ 1,650)
MCA: Min. circuit amps (A)	MOCP: Max. over current protection (A)
RLA: Rated load amps (A)	W: Fan motor rated output (W)

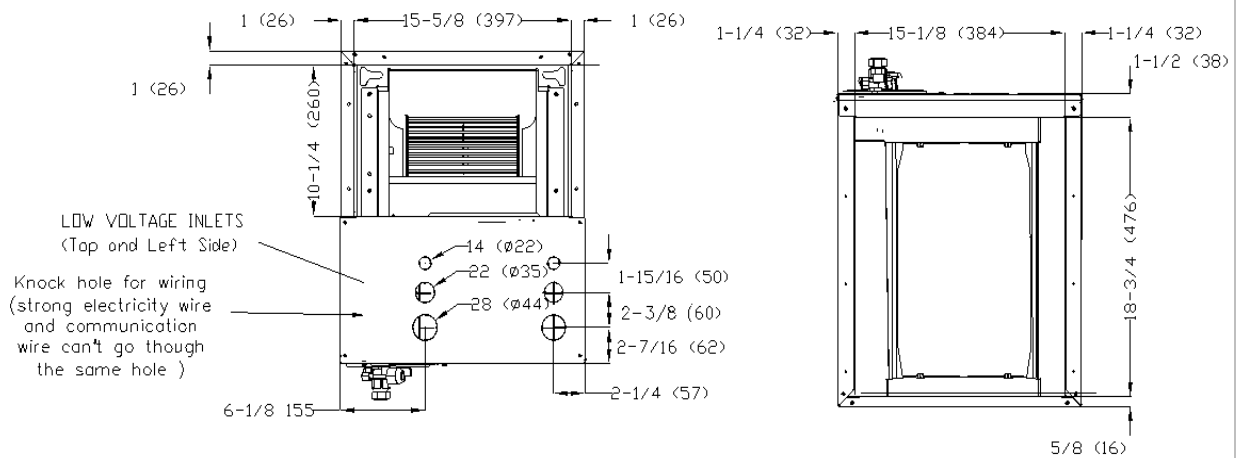
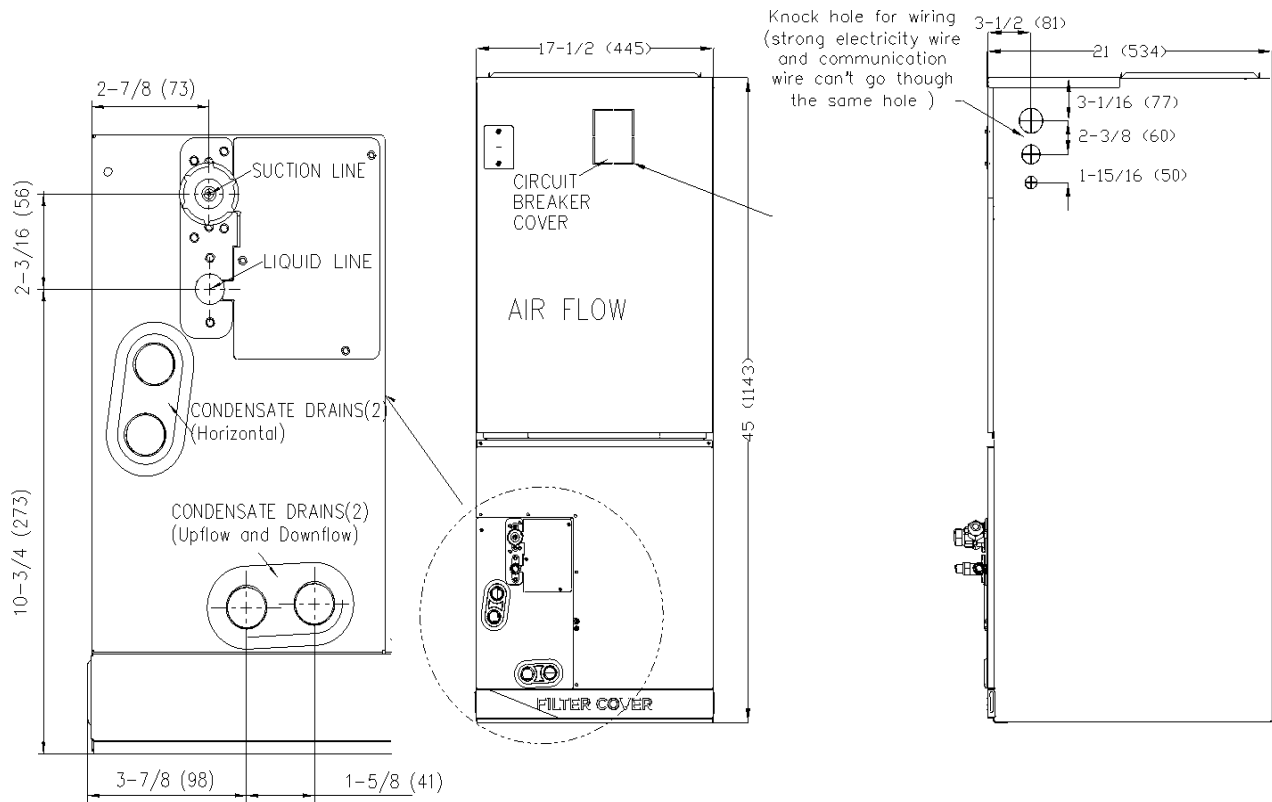
3. @ 17°F Rated	12,600
4. @ 5°F Rated: Capacity / COP	11,200 / 2
5. @ 5°F Max: Capacity	11,200
Standard Operating Range(°F/°C)	-13~75(-25~24)
1. Rated Heating Conditions:	Indoor: 70°F DB/60°F WB Outdoor: 47°F DB/43°F WB
2. Rated Heating Conditions:	Indoor: 70°F DB/60°F WB Outdoor: 17°F DB/15°F WB
3. Heating Conditions, Compressor	Indoor: 70°F DB/60°F WB
Operating at Max. Frequency	Outdoor: 5°F DB/5°F WB

PIPING	
Throttle type(Indoor)	EXV
Throttle type(Outdoor)	EXV
Liquid Size	3/8" (9.52mm)
Gas Size	3/4" (19mm)
Max. Piping Length(ft/m)	98 (30)
Max. Height Difference(ft/m)	66 (20)
Max. Pre-charged Length(ft/m)	25 (7.5)
Refrigerant Pre-charged Amount(oz/kg)	51 (1.45)
Additional Charge of Refrigerant((oz/ft)/(g/m)	0.7 (65)
Connection Method	Flared*

*The gas valve of the outdoor unit is 5/8", 5/8" to 3/4" flare to flare connector is required for the installation.

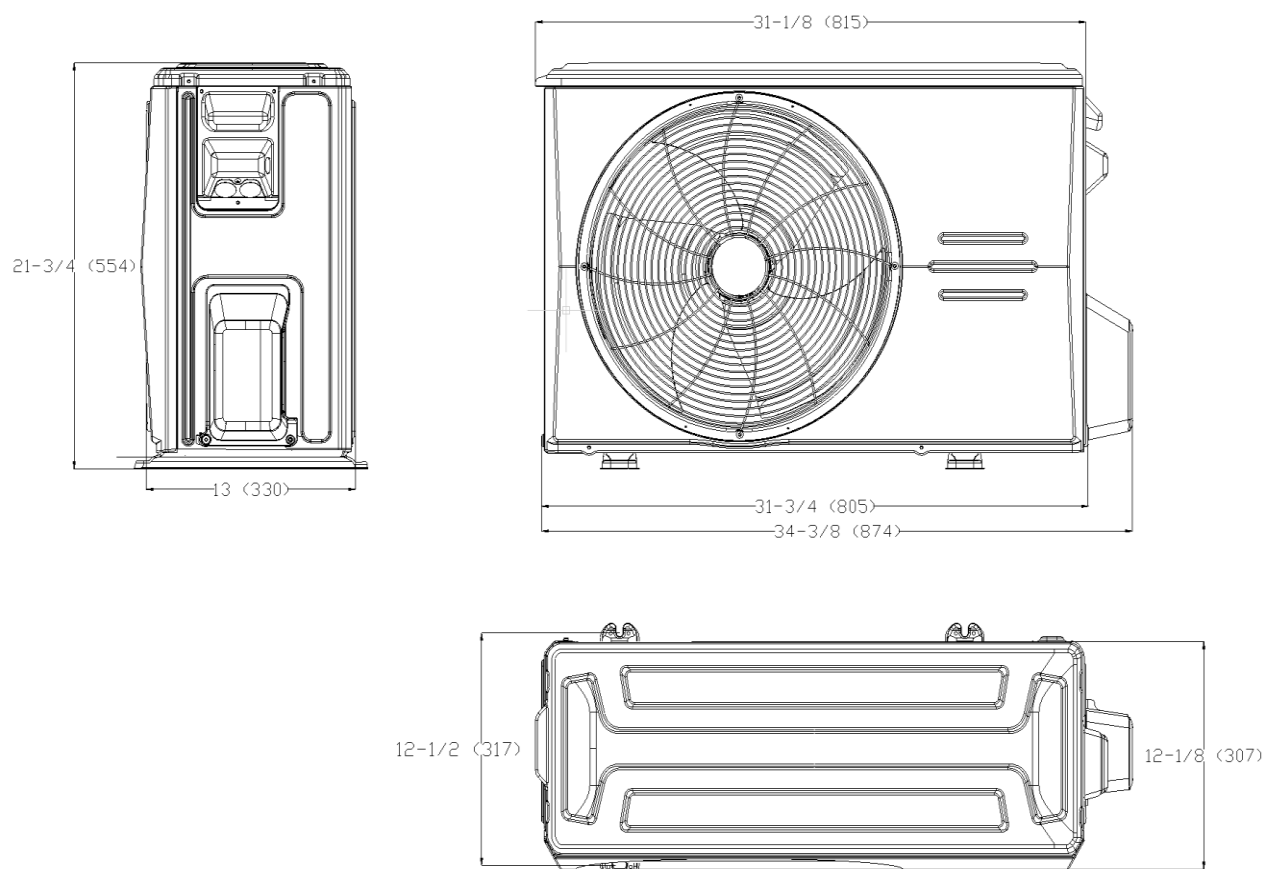
Indoor Unit Dimension

Unit:inch(mm)

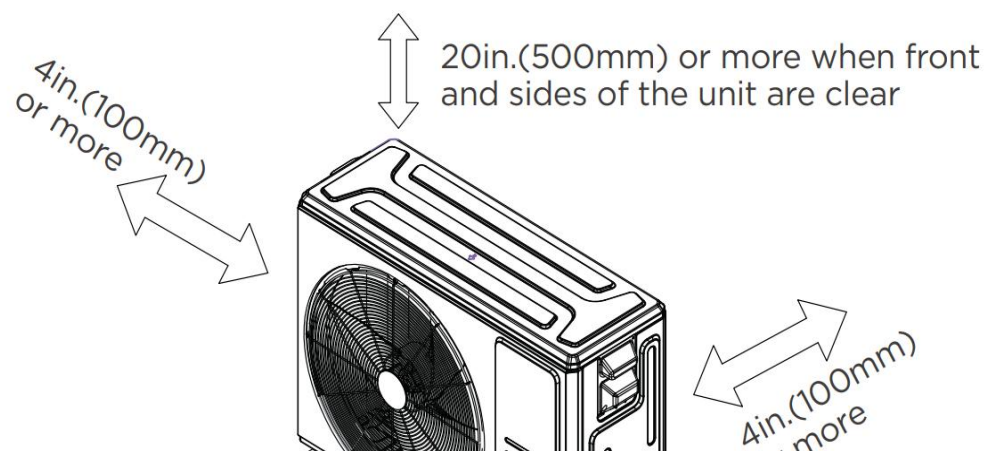


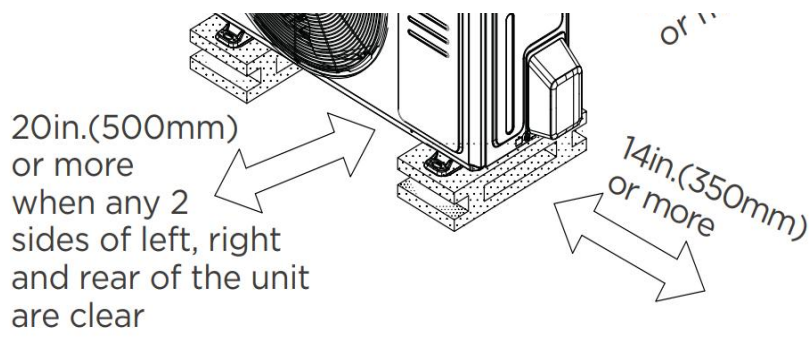
Outdoor Unit Dimension

Unit:inch(mm)

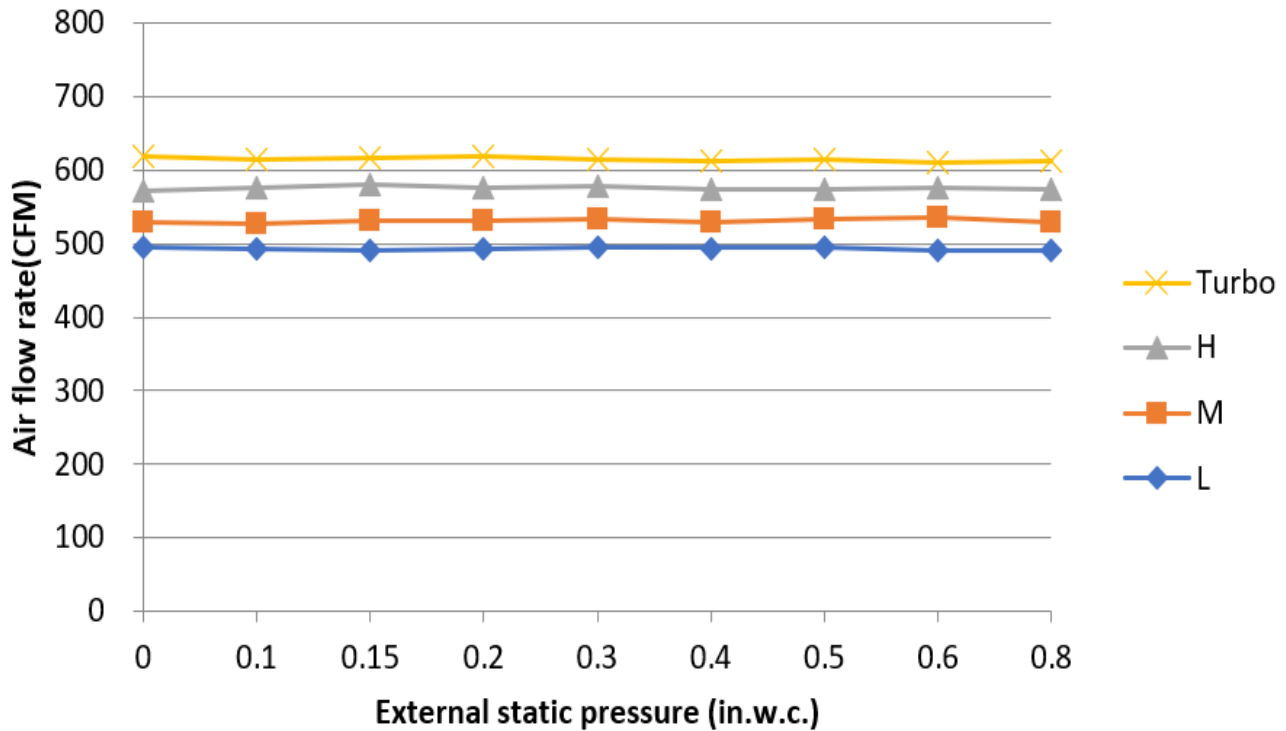


Installation Instruction For Outdoor Unit





Fan Performance For Indoor Unit



Features

- Multi-position installation: horizontal(left or right), vertical(up or down)
- Aluminum Coil
- Constantly Air Flow system up to 0.80 In.W.G

- 1 inch R4.2 fiberglass free insulation reduces condensation and boosts efficiency(optional)
- Optional Auxiliary heat kit up to 25kW
- Easy Maintenance
- Multiple control options available:
 - Two way communication wired controller:120N(X6)
 - Two way communication wired controller with built-in WiFi:120N(X6W)
 - Wireless remote controller
 - Third-Party 24V Thermostat
- Adaptive Control System
- High efficiency up to 18.8 SEER2, 11 EER2, 9.7 HSPF2
- Chassis heater and crankcase heater equipped as standard