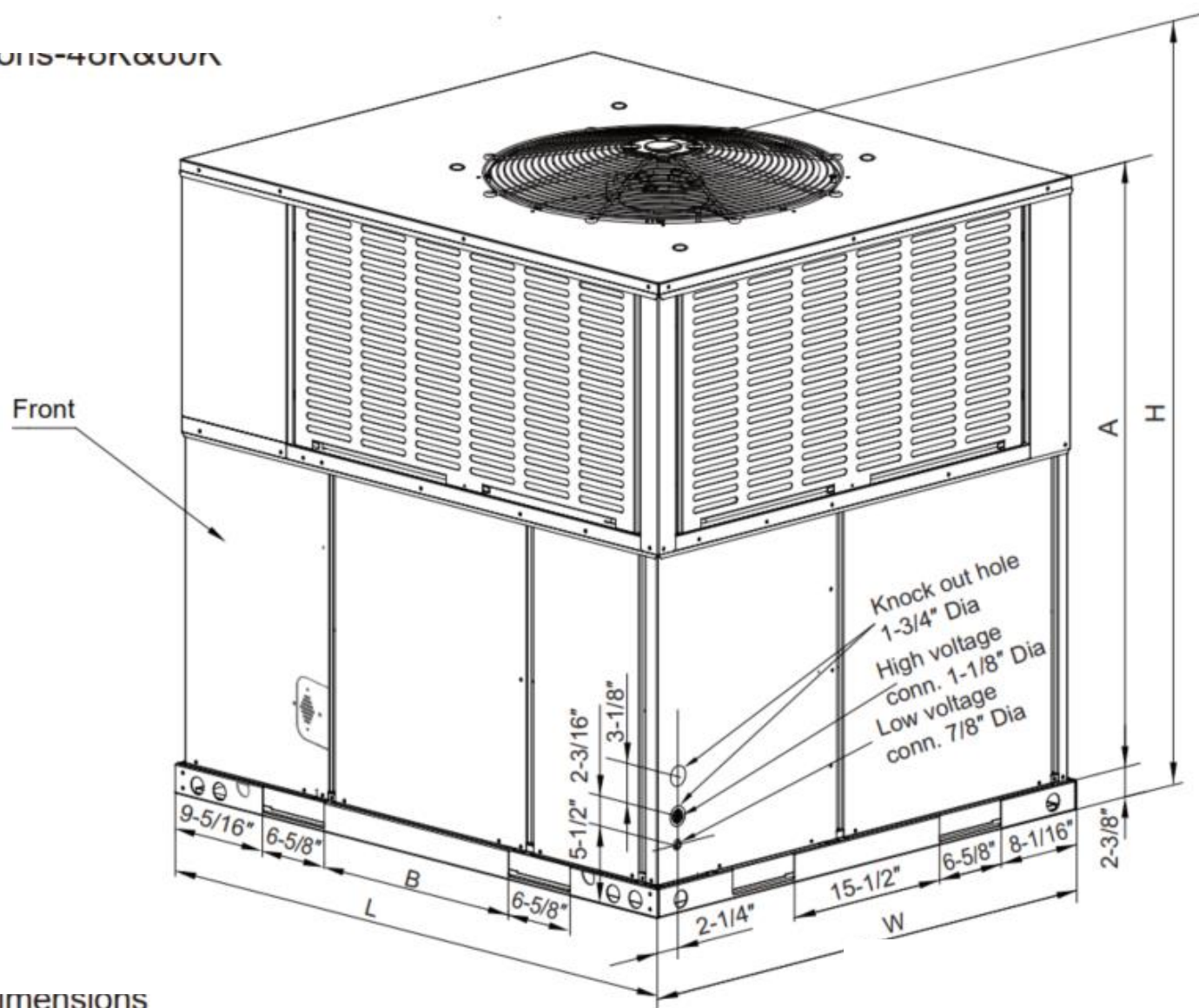


Submittal

TAG:

PACKAGE HEAT PUMP & AIR CONDITIONING
14 SEER SERIES 3Ph
Cooling capacity: 5Tons

0115-40R&00R



Dimensions

Model size	Dimensions				
Heat Pump	"L" in.[mm]	"W" in.[mm]	"H" in.[mm]	"A" in.[mm]	"B" in.[mm]
5Tons	51-9/16 [1310]	44-13/16 [1140]	51-7/16 [1306]	47-5/16 [1202]	19-11/16 [500]

Specifications

Nominal Tonnage	5.0
Volt (V-Ph-Hz)	208/230-3-60
ARI COOLING PERFORMANCE	
ARI net capacity (Btu)	57000
EER	11.8
SEER	14.0
Nominal CFM	1850
System power (kW)	4.83
Refrigerant type	R410a
Refrigerant charge (lb-oz)	13-4
ARI HEATING PERFORMANCE	
47°F Capacity Rating (Btu)	57000
System power (kW)	4.58
17°F Capacity Rating (Btu)	34500
System power (kW)	4.04
HSPF	8.0
DIMENSIONS (Inches)	
Length	51-9/16
Width	44-13/16
Height	51-7/16
OPERATING WT. (lbs)	557
COMPRESSORS	
Type	Scroll
Quantity	1
CONDENSER COIL DATA	
Face area (Sq. Ft)	20.17
Rows	3+3
Fins per inch	17
Tube diameter	9/32
Circuitry type	interlaced

EVAPORATOR COIL DATA	
Face area (Sq. Ft)	6.1
Rows	4
Fins per inch	17
Tube diameter	9/32
Circuitry type	interlaced
Refrigerant control	Orifice
CONDENSER FAN DATA	
Fan diameter (inch)	26-3/8
Type	Prop
Drive type	Direct
No. speeds	1
Number of motors	1
Motor HP each	1/3 (290W)
RPM	1070
Nominal total CFM	5000
DIRECT DRIVE EVAP FAN DATA	
Quantity	1
Fan Size (inch)	11x10-5/8
Type	Centrifugal
No. speeds	1
Motor HP each	3/4 (560W)

Airflow Performance Data

Side and Bottom Duct Application

Model Number	Motor Speed	External Static Pressure-Inches W.C.[kPa]									
			0[0]	0.1[.02]	0.2[.05]	0.3[.07]	0.4[.10]	0.5[.12]	0.6[.15]	0.7[.17]	0.8[.20]
5Tons	Low (Tap3)	CFM	1784	1732	1675	1610	1548	/	/	/	/
		Current/A	2.6	2.7	2.7	2.8	2.9	/	/	/	/
		Power/W	312	321	329	337	347	/	/	/	/
	Middle (Tap4)- Factory	CFM	2046	1996	1953	1900	1844	1790	1700	1676	1550
		Current/A	3.7	3.8	3.9	3.9	4.0	4.1	4.2	4.3	4.6
		Power/W	459	471	481	492	503	514	527	538	577
	High (Tap5)	CFM	/	2227	2185	2142	2094	2042	1951	1938	1790
		Current/A	/	5.1	5.2	5.2	5.3	5.4	5.5	5.6	5.7
		Power/W	/	646	658	670	683	695	709	724	735

- The air distribution system has the greatest effect on airflow. The duct system is totally controlled by the contractor. For this reason, the contractor should use only industry-recognized procedures.
- Heat pump systems require a specified airflow. Each ton of cooling requires between 350 and 450 cubic feet of air per minute (CFM), or 400 CFM nominally.
- Duct design and construction should be carefully done. System performance can be lowered dramatically through bad planning or workmanship.
- Air supply diffusers must be selected and located carefully. They must be sized and positioned to deliver treated air along the perimeter of the space. If they are too small for their intended airflow, they become noisy. If they are not located properly, they cause drafts. Return air grilles must be properly sized to carry air back to the blower. If they are too small, they also cause noise.
- The installers should balance the air distribution system to ensure proper quiet airflow to all rooms in the home. This ensures a comfortable living space.
- An air velocity meter or airflow hood can give a reading of system CFM.
- When installation, installer should select the air speed according to the actual setting static pressure. Please refer to the Airflow Performance Data.

Electrical Data

Size (Tons)	Compressors		OD Fan Motors	Supply Blower Motor	Heater Circuit(without units)						Heater Fan Speed		
	RLA	LRA	FLA	FLA	Model	kW	Stages	Amps	MCA (Amps)	Max Fuse Breaker Size (Amps)	Low	Middle	High
60(5.0)	22.0	36.8	1.9	5.8	None	-	-	None	35.2	50			
					EHK-10J	7.5/10	1	36.1/41.7	46/53	50/60	●	●	●
					EHK-15J	11.3/15	2	54.2/62.5	68/79	70/80	✕	●	●
					EHK-20J	15/20	2	72.2/83.3	91/105	100/110	✕	✕	●

Note: Product specifications change from time to time as product improvements and developments are released and may vary from those in this document. Tuttokool has a policy of continuous product and product data improvement and it reserves the right to change design and specification without notice.

